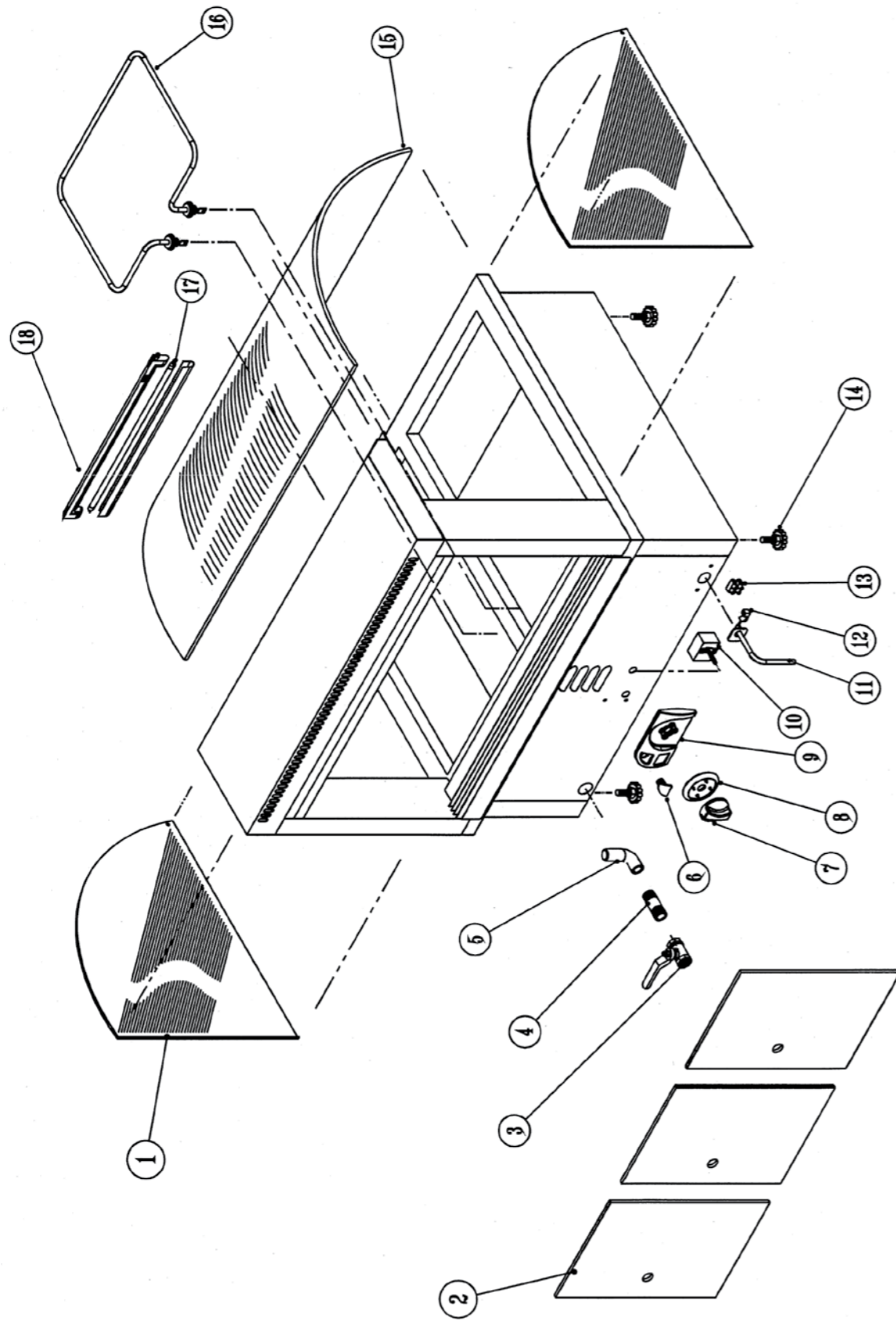


BMA4002

BMA4002



| STOCK CODE | DESCRIPTION | MAN.PART NUMBER | DRAWING REF |
|------------|---|-----------------|-------------|
| XBMA0008 | HOT FOOD BAR ANVIL - SIDE GLASS | 10-GLA-BMA402-S | 1 |
| XFFA9042 | GAS FRYER FREE STANDING 20L - BALL VALVE | 7-BV-BMA7102 | 3 |
| XKNB0035 | PILOT LIGHT RED 230V | 1-PL-BMA0001 | 6 |
| XKNB0001 | CONTROL KNOB [AXIS] - RED | 3-CK-AXIS | 7 |
| XKNB0027 | CONTROL PANEL BEZEL AXIS ENERGY REGULATOR SCALE 0-6 | 3-CPB-BMA0001 | 8 |
| XKNB0010 | CONTROL PANEL FASICA AXIS | 3-CPF-AXIS | 9 |
| XBMA0001 | BAIN MARIE/URN ANVIL - ENERGY REGULATOR NEW NEW | 1-ER-URS0012 | 10 |
| XPCB0002 | POWER CORD WITH PLUG-BLACK 16A (1.5m) | 2-PC-CE-DR | 11 |
| XTSA0010 | TOASTER ANVIL (TSA1009) - CABLE CLAMP | 3-CG-1.5 | 12 |
| XFFA0006 | ANVIL FRYER - CONNECTING BLOCK | 3-FF-CB | 13 |
| XFTA1002 | FLAT TOP ANVIL - ADJUSTABLE FEET | 3-ADJ-PF | 14 |
| XBMA0010 | HOT FOOD BAR ANVIL - FRONT CURVED GLASS | 10-GLA-BMA402-C | 15 |
| XBMA0019 | HOT FOOD BAR - FLUORESCENT BULB & HOLDER | 1-LF-BMA4002 | 18 |

