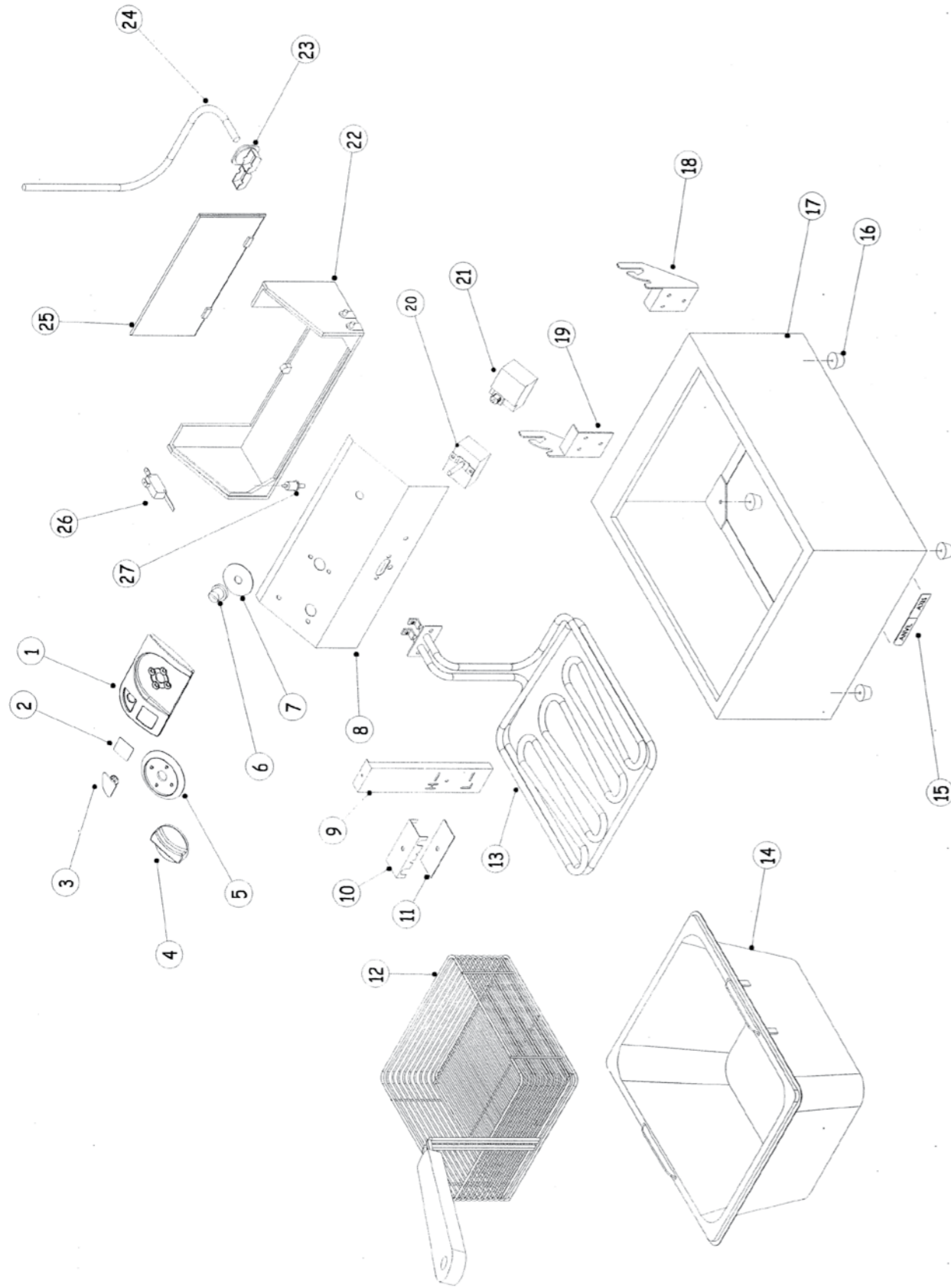


FFA5001

FFA5001



| STOCK CODE | DESCRIPTION | MAN.PART NUMBER | DRAWING REF |
|------------|-------------------------------------------------|-----------------|-------------|
| XFFA0002 | ANVIL FRYER - PILOT LIGHT | 1-PL-GP | 3 |
| XFFA1003 | ANVIL FRYER - FACIA CONTROL PANEL INSERT | 4-ANVIL-CP-IN-1 | 2 |
| XFFA0001 | ANVIL FRYER - THERMO KNOB | 3-KNOB-FF | 4 |
| XFFA1001 | ANVIL FRYER - FACIA CONTROL PANEL | 3-CP-ANVIL | 1 |
| XFFA0013 | ANVIL FRYER - SAFETY CUTOUT CAP | 3-FF-SAF-CAP | 6 |
| XFFA0014 | ANVIL FRYER - SAFETY CUTOUT DECAL | 4-FACIA-SAFETY | 7 |
| XFFA5003 | ANVIL/McCAINS FRYER - ELEMENT | 5-3400W-FF | 13 |
| XKNB0006 | DOMED LOGO LARGE AXIS | 4-DL-L-AXIS | 15 |
| XFFA0011 | ANVIL FRYER - OVERTEMP THERMOSTAT(FFA1002 ONLY) | 1-THERMO-FF-SAF | 21 |
| XFFA0005 | ANVIL FRYER - THERMOSTAT | 1-THERMO-FF-UL | 20 |
| XFFA5004 | ANVIL/McCAINS FRYER - ELEMENT BOX | 3-FF-ELEMENTBOX | 22 |
| XTSA0010 | TOASTER ANVIL (TSA1009) - CABLE CLAMP | 3-CG-1.5 | 23 |
| XPCB0002 | POWER CORD WITH PLUG-BLACK 16A (1.5m) | 2-PC-CE-DR | 24 |
| XFFA0010 | ANVIL FRYER - MICROSWITCH | 1-FF-MICRSWITCH | 26 |
| XFFA0004 | ANVIL FRYER - MICRO SWITCH PIN | 3-MS-FFA0001 | 27 |

