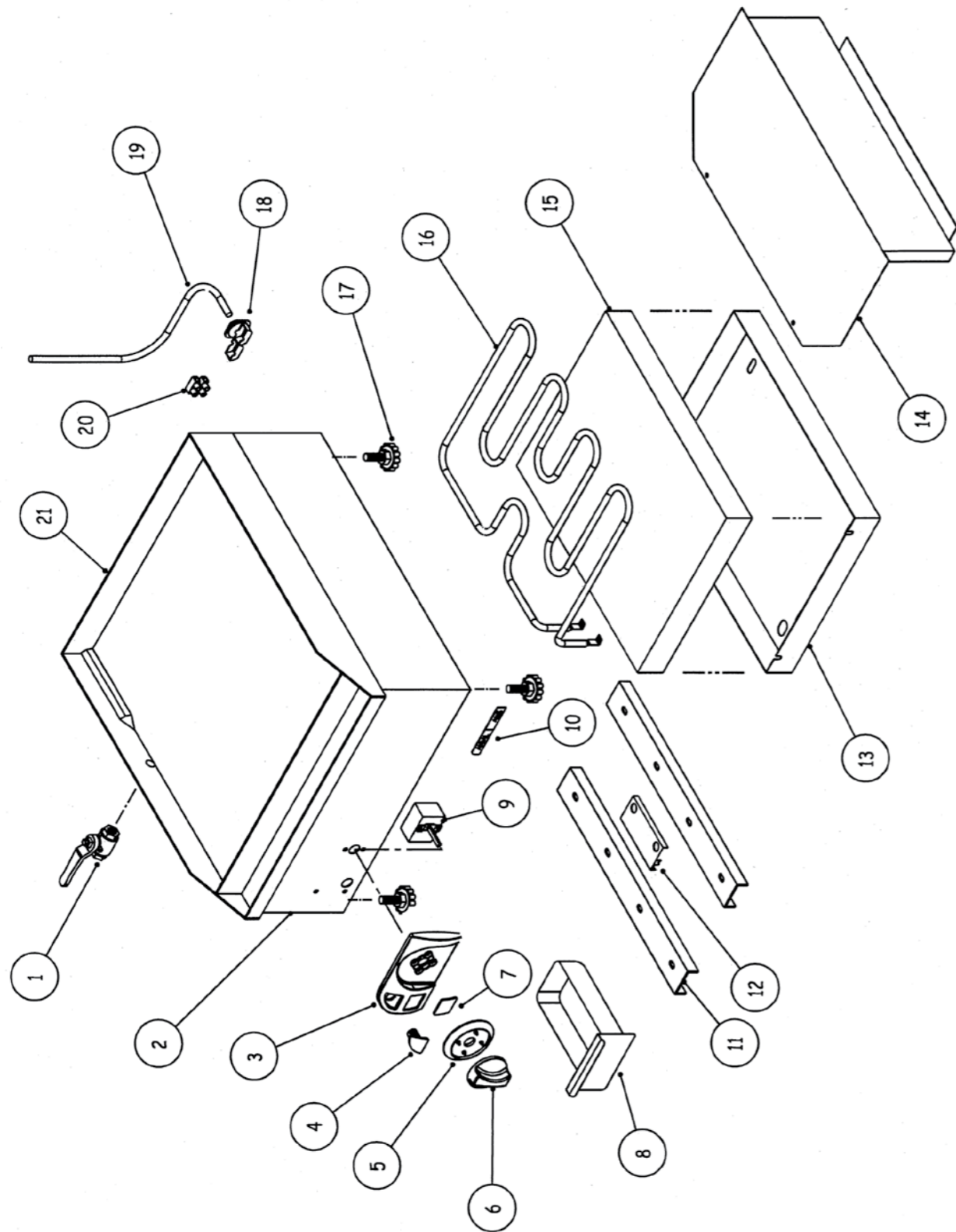


FTA4400

FTA4400



STOCK CODE	DESCRIPTION	MAN.PART NUMBER	DRAWING REF
XFTA2003	FLAT TOP EGG+BACON - BORE VALVE	7-B/VALVE-1/4	1
XKNB0010	CONTROL PANEL FASICA AXIS	3-CPF-AXIS	3
XKNB0035	PILOT LIGHT RED 230V	1-PL-BMA0001	4
XKNB0029	CONTROL PANEL BEZEL AXIS THERMOSTAT SCALE 0-200C	3-CPB-FFA0001	5
XKNB0001	CONTROL KNOB [AXIS] - RED	3-CK-AXIS	6
XKNB0039	CONTROL PANEL INSERT THERMOSTAT/ENERGY REGULATOR	4-CPI-TEMP	7
XFTA0006	FLAT TOP ANVIL -FAT TRAY	82-EGC-SS-THAND	8
XFFA0005	ANVIL FRYER - THERMOSTAT	1-THERMO-FF-UL	9
XKNB0006	DOMED LOGO LARGE AXIS	4-DL-L-AXIS	10
XFTA1001	FLAT TOP ANVIL - ELEMENT 2000W (400mm)	5-2000W-M/GRILL	16
XFTA1002	FLAT TOP ANVIL - ADJUSTABLE FEET	3-ADJ-PF	17
XTSA0010	TOASTER ANVIL (TSA1009) - CABLE CLAMP	3-CG-1.5	18
XPMA0017	CREPE MACHINE - POWER CORD	2-PC-CE-CP	19
XFFA0006	ANVIL FRYER - CONNECTING BLOCK	3-FF-CB	20

